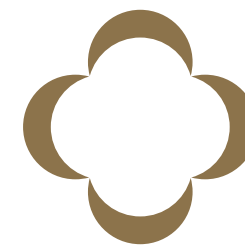




Celso de Lemos
PORTUGUESE EXCELLENCE

INSPIRATIONS 2024



SCAN HERE

To browse our
full collection catalog





The Oeko-Tex label obtained by our company is the fruit of a demonstrated commitment to invest in biological water treatment and the use of biodegradable products.



WATCH OUR
SUSTAINABILITY VIDEO:



THE **BEST COTTON** IN THE WORLD

Certified Egyptian Giza Cotton Extra Long Staple is recognized as the finest cotton in the world and is used for the production of Celso de Lemos bed linens.

Cultivated on the banks of the Nile, the cotton is picked by hand. The fiber is treated to create yarn of exceptional quality resulting in superior softness, absorbency, durability and elegance.



Baya

What could be more inspiring than the charming fishermen-town of Costa Nova and its striped houses? We are revisiting this classic design, which is making a strong comeback, by mixing our ranges of vibrant colors into an extremely light & soft percale for the summer.



« Most of the world is covered by water. A fisherman's job is simple: Pick out the best parts. » - Charles W. Waterman



Summer stripes,
Summer songs,...

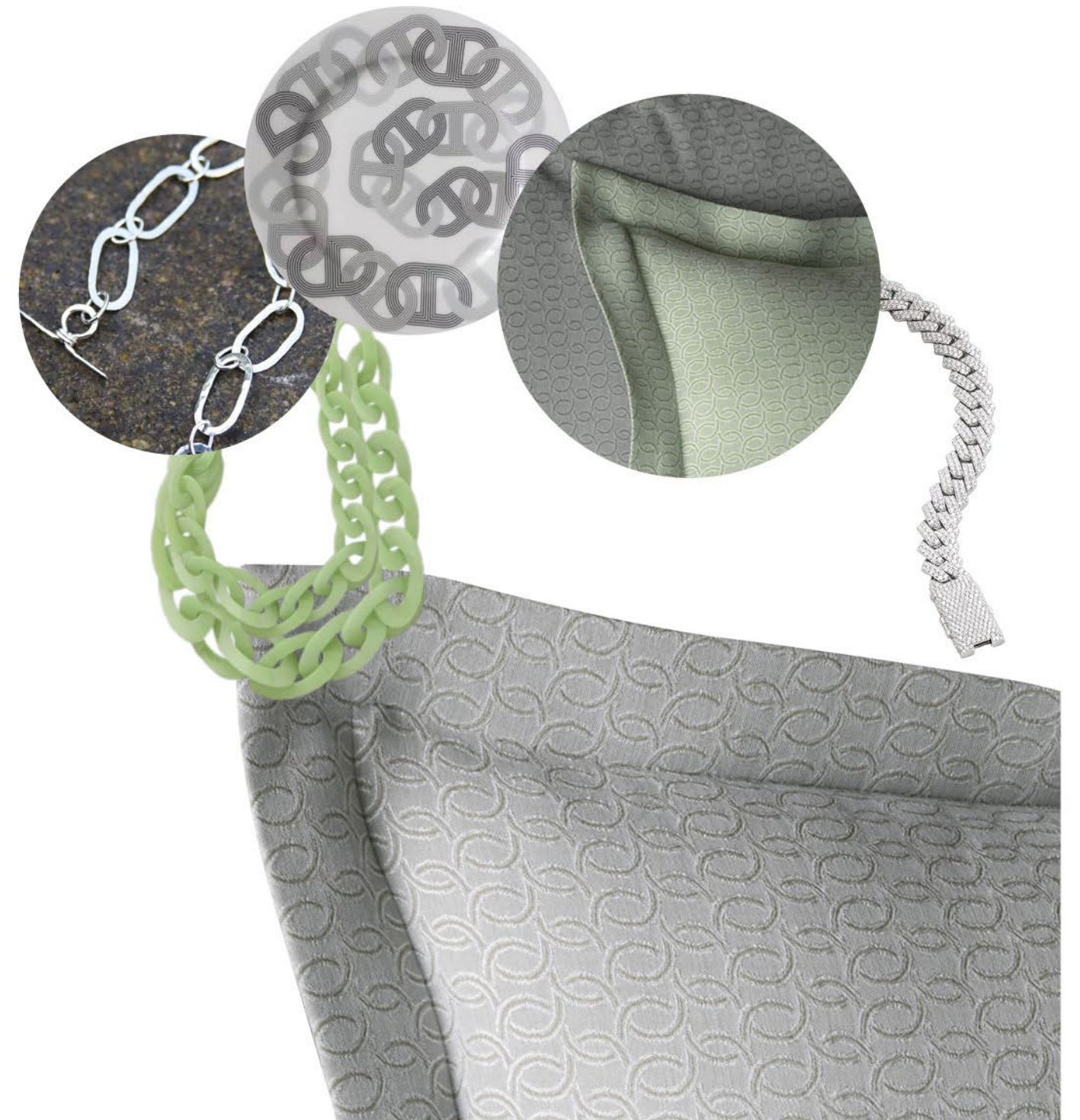




BIJOUX

« Green is the prime color of the world, and that from which its loveliness arises. » - Pedro Calderon de la Barca

The **BIJOUX** bedlinens feature a captivating jacquard design in shades of green. Inspired by the lush tones of olive, jade, and laurel, and drawing inspiration from the intricate beauty of jewelry chains. **BIJOUX** adds a touch of sophistication and glamour to your bedroom decor.





Cabo Verde

« Cabo Verde is where the rhythm of the ocean meets the melody of the palm trees, a symphony of paradise. » - Unknown

CABO VERDE captures the essence of tropical paradise and relaxation. Crafted from luxurious Silk and Extra Long Staple Cotton, this pillow features a captivating jacquard design in a fresh green palm tree pattern against a background pearl grey.

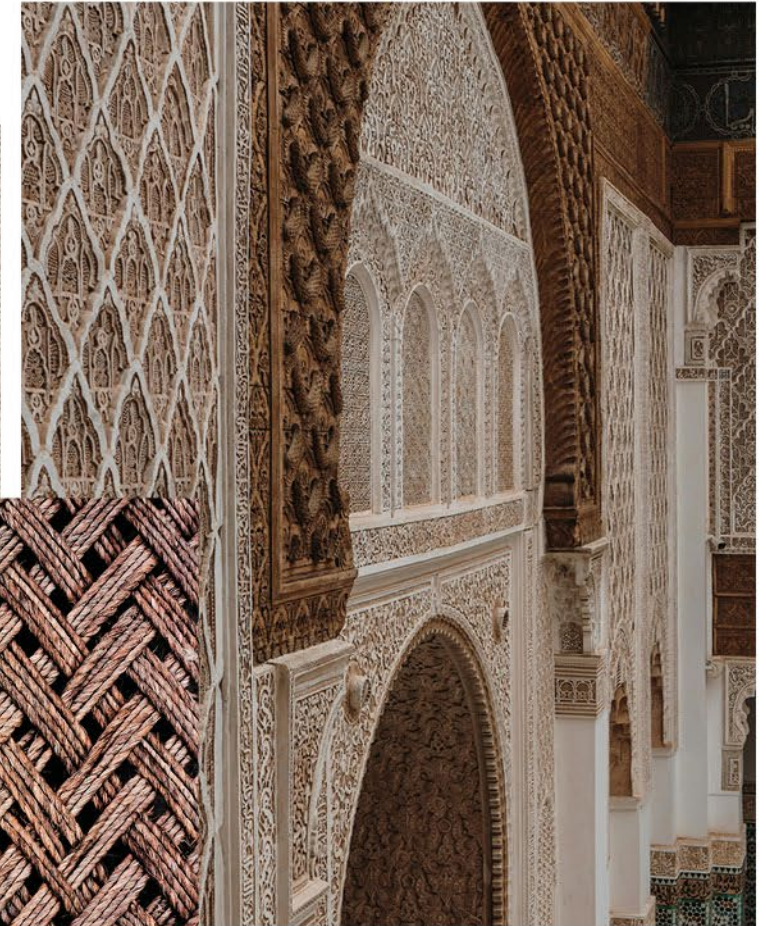
Inspired by the idyllic landscapes of the Cape Verde islands, **CABO VERDE** evokes feelings of serenity, holiday, and tranquility.





Cecile

« Softness is not weakness. It takes courage to stay delicate in a world this cruel. »
- Beau Taplin



The **CECILE** knitted throw, is a luxurious blend of Cotton and Cashmere that epitomizes comfort and elegance. This exquisite throw combines the breathability of Cotton with the unparalleled softness of Cashmere, thus creating a perfect companion for cozying up on chilly evenings or adding a touch of sophistication to your home decor.

The **CECILE** throw, with its refined texture and timeless appeal, is designed to provide both warmth and style. An essential addition to any living space.

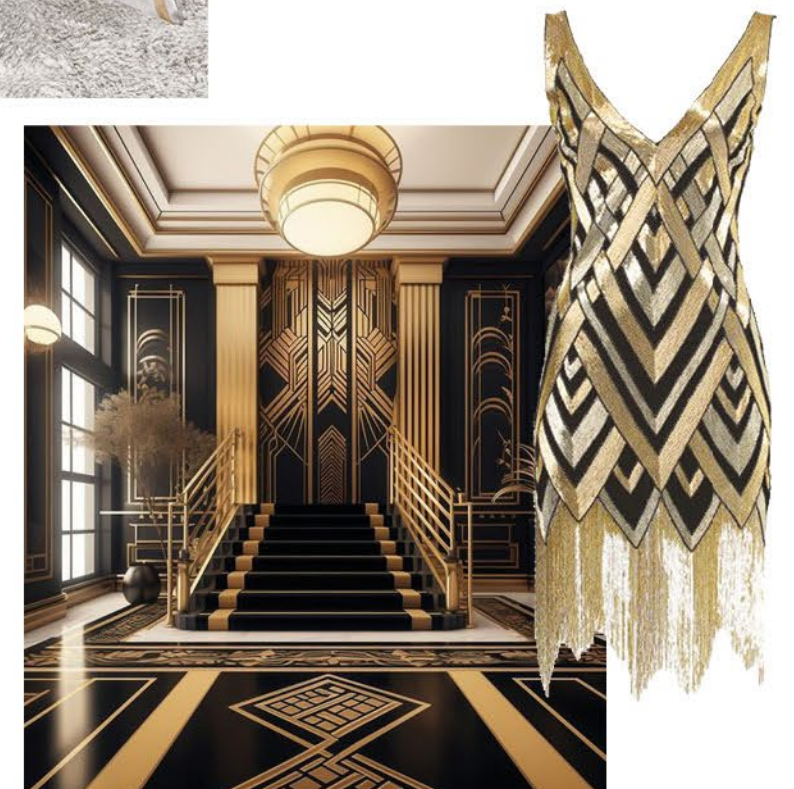
CHARLESTON

« We dance for laughter, we dance for tears, we dance for madness, we dance for fears, we dance for hopes, we dance for screams, we are the dancers, we create the dreams. » - Albert Einstein



Art Deco

The **CHARLESTON** bed is inspired by the Roaring 20's and the Art Deco period, adds a playful touch to your decor. The decade of this architectural style, emphasising the era's social, artistic and cultural dynamism, can be crystallised in 3 words: simplicity, color and geometry.





Exquise

« There is material enough in a single flower for the ornament of a score of cathedrals. » - John Ruskin

The ornamental acanthus that can be found throughout all periods in decorative Arts and especially in the Portuguese Azulejos, creates an effect of decorative abundance. The gold elegant leaves curve voluptuously in the cream version of **EXQUISE**, which seems pre-destinated to a nuptial bedroom. This elegant linen expresses the emblematic ornamental motif, blooming so willingly. In its blue version. Considered as a very royal color, **EXQUISE** evokes rolling waves bursting on the Portuguese sandy beaches.



Curvey
acanthus

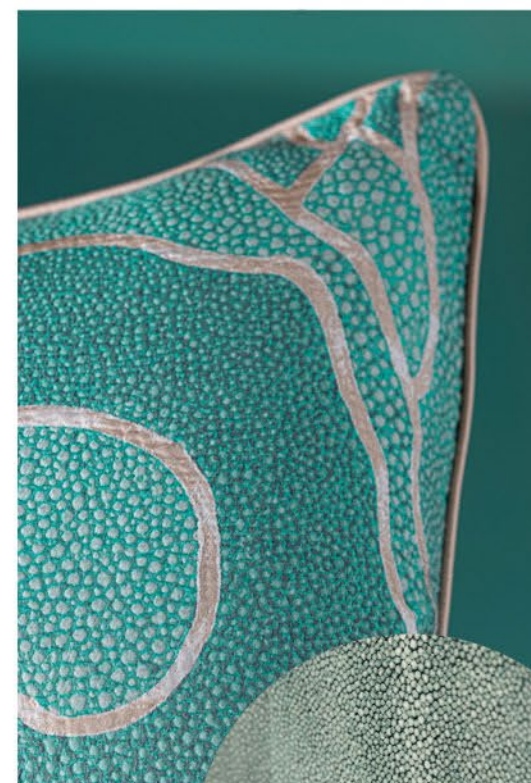


Funchal

The **FUNCHAL** bed cover is the union of two inspirations: the shagreen and the lotus flower.

The basis of this beautifully woven jacquard is inspired by the granulated rough surface of shagreen leather. This leather is precious, ultra-resistant, untanned and used as decorative material.

The fluid part of the design is inspired by the graphics of lotus leaves. The lotus represents enlightenment, beauty, purity, prosperity and eternity.



Pure & Fluid

*« Water surrounds the lotus flower,
but does not wet its petals. »
- Gautama Buddha*



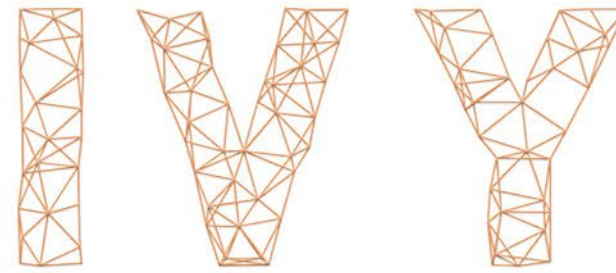
Gemini

« Geminis are great communicators, known for their duality and adaptability, making life a thrilling adventure. » - Unknown



GEMINI, our luxurious bed linens collection, brings a touch of duality and sophistication to your bedroom.

Crafted from the finest sateen woven fabric, each piece in the **GEMINI** collection features a unique two-tone design: one color graces the front, while a complementary shade adorns the back. This reversible design allows you to effortlessly switch up your bedroom's look, providing both versatility and elegance.

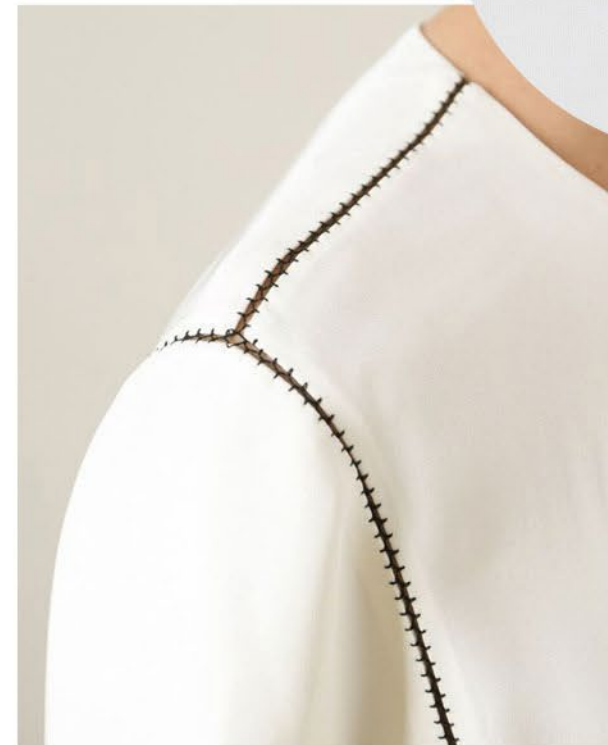


Introducing **IVY**, our exquisite bed linens collection that combines modern elegance with timeless sophistication.

Each sheet in this collection features a distinguished and delicate stitching in a palette of colors including silver, powder, olive green, terracotta orange, sky blue, and black, all set against a crisp white percale woven fabric.

Imagine drifting off to sleep enveloped in the luxurious softness of **IVY** bed linens, where the subtle, yet striking, stitching in various hues brings a fresh and contemporary look to your space.

The harmonious blend of colors on pristine white fabric creates a visually pleasing and serene environment, perfect for relaxation and rejuvenation.



« Nature always wears the colors of the spirit. » - Ralph Waldo Emerson



Jag

« The jaguar prowls through the jungle like a shadow of the night, a symbol of mystery and majesty. »

- Unknown



Indulge in opulent sophistication with our luxurious decorative pillow, **JAG**, inspired by the regal allure of the jaguar.

Crafted in shades of grey and perle, its sleek design exudes understated elegance.

Finished with an exquisite white piping, this statement piece adds a touch of refined glamour to any interior setting.



LEMS

« Velvet is the fabric of magic and dreams. » - Unknown



Crafted with exquisite chenille weaving, **LEMS** is a mesmerizing blend of cherry pink, ecru, and golden threads. **LEMS** is reminiscent of the intricate patterns found in Raku art and the cracked, dried ocean floor.

Inspired by the timeless allure of velvet, **LEMS** celebrates the tactile richness and luxurious sheen of this iconic fabric.

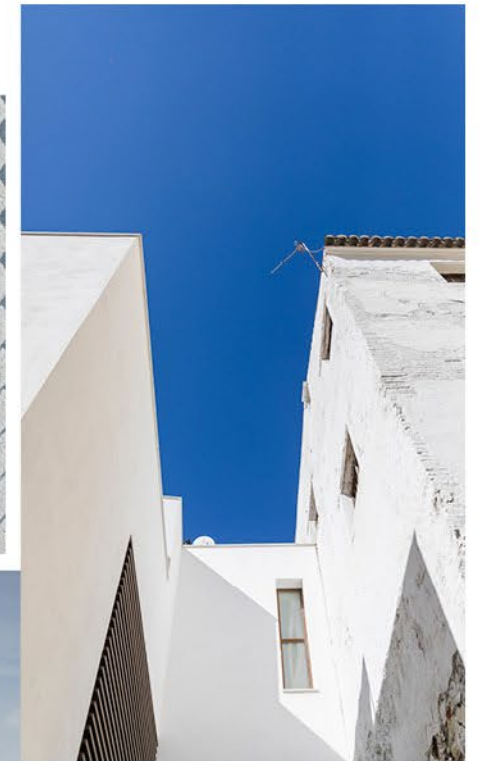
With its velvety texture and lustrous finish, each piece invites you to revel in the indulgent comfort and timeless elegance that velvet embodies.





MARBELLA

« Joy is to fun what the deep sea is to a puddle. It's a feeling inside that can hardly be contained. » - Terry Pratchett



Timeless Theatricality

MARBELLA, a throw in light Cashmere, picked up the classic 'Herringbone' pattern and revisited it by adding rhythm and color. The herringbone pattern is an arrangement of rectangles, so named for a fancied resemblance to the bones of a fish such as a herring. Through the playful pattern in blue and white, we obtain an optical effect which gives dynamics and originality to the design. Whether this pattern is part of a modern decor or a retro trend, its graphics are simple and timeless. **MARBELLA** brings a touch of theatricality and elegance.



Timeless & Elegant



PASTOR

« It is not the mountain we conquer but ourselves. » – Sir Edmund Hillary

PASTOR is the word for shepherd in the Portuguese language. They herd the sheep in the mountains surrounding our hometown. Wrapped in woolen blankets, they sleep with the flock.

This beautiful woven throw, made of Cashmere, is a tribute to these honorable shepherds of the 'Serra da Estrela' mountains.

Pompadour



*« The heart wants what it wants.
There's no logic to these things.
You meet someone and you fall in
love, and that's that. » - Woody Allen*

POMPADOUR pays homage to the legendary Madame de Pompadour, a prominent figure in the court of King Louis XV of France. Renowned for her impeccable taste and influence on art and fashion, Madame de Pompadour epitomized elegance and sophistication.

From intricate floral motifs reminiscent of the castle's lush gardens to regal patterns found in the lavish interiors, **POMPADOUR** bedlinens elevate any bedroom into a sanctuary of luxury and style. Incorporating the color "pompadour" a delicate shade of pale pink, our collection captures the essence of femininity and romance. Symbolizing grace and sophistication, this color infuses each piece with an air of timeless elegance, evoking the soft hues favored by Madame de Pompadour herself.

Porto

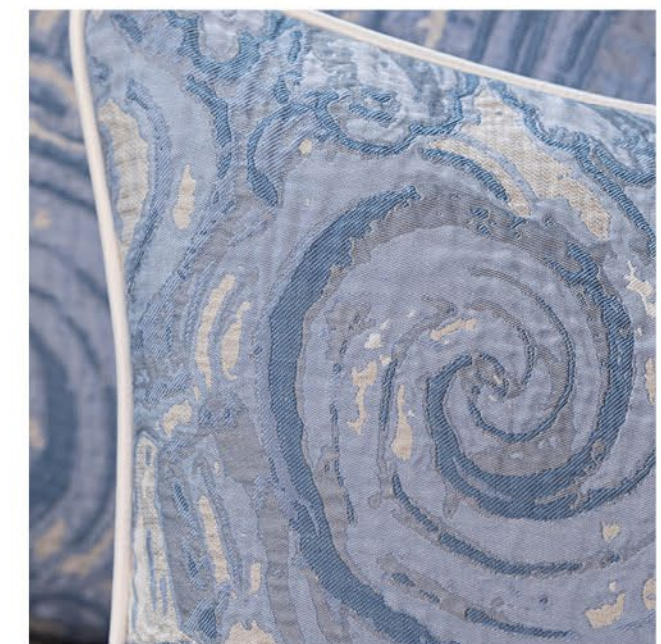
« Porto's beauty lies in its ability to blend the past with the present, creating a city that is both timeless and contemporary. » - Unknown



Azulejos

PORTO is a stunning piece that captures the essence of Portugal's rich cultural heritage. This exquisite jacquard pillow is inspired by the iconic blue-colored tiles, known as 'Azulejos,' which adorn the facades of buildings throughout Portugal. The pillow is elegantly finished with a refined piping in a soft sateen, adding an extra layer of sophistication and detail.

Imagine placing the **PORTO** pillow on your sofa or bed, where it serves not only as a comfortable addition but also as a striking visual centerpiece. The detailed design and rich color palette evoke the historic charm and artistic spirit of Portugal, making it a perfect accent piece for any decor.





Poseidon

« Because there's nothing more beautiful than the way the ocean refuses to stop kissing the shoreline, no matter how many times it's sent away. » - Sarah Kay



The Ocean's roar
is music to the soul

The Ocean is a mirror
reflecting the world

POSEIDON is inspired by the water and named after the God of the waves.

A sumptuous jacquard, in white and fresh blue; let your self be swayed on this sea of blue.
Woven in the luxurious Extra Long Staple Cotton from Giza; known for its durability, drape and softness.

The decorative cushions are finished with elegant white satin piping.



Romeo

The **ROMEO** knitted throw, is a luxurious creation woven from the finest Modal and Cashmere. The blend of Modal, known for its silky smooth texture and durability, and Cashmere, renowned for its luxurious warmth and softness, makes the **ROMEO** throw an essential addition to any home. Imagine enveloping yourself in the **ROMEO** throw, its delicate fibers gently caressing your skin, providing a sense of comfort and opulence. Whether draped over your sofa, laid across your bed, or wrapped around you on a chilly evening, the **ROMEO** throw transforms any space into a haven of relaxation and style.



« Cashmere: because some things in life are meant to be both beautiful and indulgent. » - Unknown



ROOWA

« If you light a lantern for another,
it will also brighten your own way. » - Nichiren



ELEGANT LIGHT-NESS,...

At the base, **ROOWA** is inspired by the Provençal clover pattern and the "Arabic lanterns & tiles".

White contours are added to the design and the shapes repeat themselves, intertwining, becoming light and elegant.

ROOWA brings together different cultures and motifs in a Cotton and Silk weaving with surprising three-dimensional effects.





Rosa

« Pink petals flutter like butterflies in the garden of the heart, bringing joy and happiness to all who behold their beauty. »

- Unknown



ROSA, our stunning decorative pillow combines elegance and sophistication. Crafted from luxurious Silk and Extra Long Staple Cotton, this pillow features a mesmerizing jacquard design in pink tones with accents of gold.

The abstract camouflage pattern adds a modern twist, creating a striking contrast against the delicate colors. Imagine adding a touch of refined beauty to your living space with the **ROSA** pillow, its intricate design reminiscent of delicate pink petals dancing in the breeze. Whether placed on your sofa or bed, this pillow becomes a statement piece, infusing your home with a sense of timeless charm and contemporary flair.



Saveur

Drawing inspiration from simplicity, geometry, and freshness, **SAVEUR** infuses your living space with contemporary sophistication and timeless charm. Imagine lounging on your sofa enveloped in the sleek lines and crisp angles of the **SAVEUR** throw. Then adding a touch of geometric flair to your favorite armchair with the coordinating pillow. With its clean, modern aesthetic, this collection effortlessly elevates any room, making it a must-have for lovers of sleek design and refined style. Inspired by the beauty of cubic art, **SAVEUR** celebrates the harmonious balance between form and function.



« Simplicity is the ultimate sophistication. »
- Leonardo da Vinci



Stars

« Keep your eyes on the stars, and your feet on the ground. » - Theodore Roosevelt



The enchanting decorative pillow **STARS** brings a touch of celestial magic to your living space. Each pillow features a mesmerizing jacquard design of golden stars, set against a backdrop of deep, luxurious grey. Drawing inspiration from fairy tales, golden dust, fireworks, and stylish blooms, these pillows exude an air of whimsical elegance and timeless charm.

Imagine drifting off to sleep under a canopy of golden stars, or lounging on your sofa surrounded by the enchanting beauty of blooming flowers. Whether you're looking to create a cozy reading nook or enhance your bedroom decor, these pillows are the perfect way to bring a touch of magic into your home.



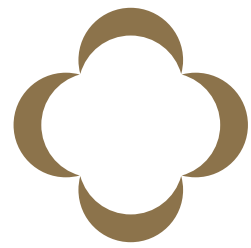
VILLA

« There is geometry in the humming of the strings, there is music in the spacing of the spheres. »
- Pythagoras



**Bold
Geometry**

VILLA, in vibrant colors, is a knitted bedspread with a zigzag pattern, resulting in a spectacular piece. Alternating lines in different thicknesses gives this throw a vibrant rhythm and sophistication. Perfect for adding a playful accent to your bed. In primary colors, a real eye-catcher that integrates effortlessly into any interior.





www.celsodelemos.com